

# 2010 Autumn Festival

## Jewelry Workshop Retreat on Whidbey Island

by Beverly Ash Gilbert

October 4 – 9 2010  
Greenbank, WA

See attached Syllabus and  
Workshop Descriptions for more details

Register on-line at: [www.gilbertdesigns.net](http://www.gilbertdesigns.net)

Questions - e-mail Beverly at [jewelry@gilbertdesigns.net](mailto:jewelry@gilbertdesigns.net)

Maximum of 10 students per class  
Tuition payment required to reserve your spot for each class on  
a first come, first serve basis

I reserve the right to cancel any class that has not attained the minimum  
class size of 6 people. You will be contacted by e-mail and may choose  
another class or opt for a refund.

# **2010 Autumn Festival**

## **Jewelry Workshop Retreat on Whidbey Island**

### **Syllabus**

\$100 per day (except Wednesday) includes:

- full day of instruction
- full color handouts
- lunch
- dinner plus wine and hor d'oeuvres

#### **Wander With Color (2 day)**

Monday, October 4 – Tuesday, October 5, 2010

10:30 – 6:30

#### **Tour Whidbey**

Wednesday, October 6, 2010

10:00 – 8:30

*Complementary*

#### **Wander with Flair**

Thursday, October 8, 2009

10:30 – 6:30

#### **Wander through Photos / La Duet**

Friday, October 9, 2009

10:30 – 6:30

#### **Beads on Metal & Beyond**

Saturday, October 9, 2010

10:30 – 6:30

## Monday & Tuesday, October 4 – 5 2010

# Wander With Color

What better way to play with color than in making bead soups? Just as a painter mixes different pigments on her palette, you will learn how to make bead soups that contain depth and movement. We will focus on single palettes of color then explore ways to wash them together. You will apply what you learn by designing and making a color wash piece that glows!

On the first morning we will discuss color theory and use paint and paper to create fast and easy color palettes. We will use the color wheels and templates in EYE FOR COLOR to enhance our color palettes and explore exciting new combinations. After lunch, we will begin pulling together bead soups and creating our one-of-a-kind piece. On day 2 we will see our project come to life!



### **Materials List if you would like to bring your own supplies:**

- 3 to 5 monochromatic Seed Bead Soups in colors that work well together and consisting of at least the following: All sizes of seed beads from 14/0 to 5/0, in numerous shapes such as round, hex, tube etc. and in a variety of finishes such as shiny, matte, transparent etc. (I usually draw from around 20 to 40 different seed bead tubes, but you may buy pre-made seed bead mixes if you prefer.)
- Accent beads (pearls, stones, glass) in colors that compliment your soups.
- Your thread of choice
- Size 12 needles
- Beeswax

### **Kits available for purchase during class:**

-Chose as many bead soups from the Bead Soup Collection as you would like for blending together, needles, wax, thread, bead mat and carrying case – all of the materials needed to complete your project.

Wednesday, October 6 2010

## Tour of Whidbey

Join us for a day touring this beautiful island, from the quaint towns filled with galleries and restaurants to the diverse beaches, and old naval forts.



Details of the tour will depend on what you are interested in seeing – a list of possibilities will be sent to participants in September.

We will stop at restaurants for lunch and dinner

Tour is complimentary (other than meals) and first-come, first-serve for those attending all week. All others on a space available basis.

# Wander with Flair

Wander with bead soups and fibers! Play with color, texture and form to create elegant, wearable art using freeform vertical netting and fibers for added pizzazz. This class will experiment with free form beadweaving and bead soups and encourage you to break rules... but always with an end design in mind!



## Materials List if you would like to bring your own supplies:

- Bead Soup consisting of at least the following: All sizes of seed beads (from 14/0 to 5/0) in numerous shapes (round, hex, tube etc.) in a variety of finishes (shiny, matte, transparent etc.).
- Pearls, stones, beads in various sizes (lots of small ones, a few medium ones and maybe a couple of large ones) in colors that match or compliment your bead soup
- 5 to 7 8-inch fibers of various types in colors to compliment your bead soup
- Your thread of choice (we will work with it doubled so choose a size B or 4#)
- Beeswax
- Size 12 needles
- Task light (optional)
- Scissors
- Bead mat for working your piece on
- Bead tray or extra mat for your bead soup
- Snap, Button or large bead for closure.

## Kits available for purchase during class:

Choose as many bead soups from the Bead Soup Collection as you would like for the size of your necklace, a package of fibers to complement your soup, needles, wax, thread, snap closure, bead mat and carrying case – all of the materials needed to complete your project.

Friday, October 8 2010

## Wander through Photos / La Duet

Wander through the garden, beach, or down memory lane with photos, fabric and beads. Interweave fabric and photographic images with bead soups and freeform stitches to create this whimsical, reversible pendant, bracelet or necklace. Throughout class, we will discuss how to create color and textural depth in your piece. You can choose to use just fabric (La Duet) or combine fabric and photos (Wander through Photos) and try a different color scheme for the back so that you have two works of art in one!



### Materials List if you would like to bring your own supplies:

- Photos (between 1 and 2 inches each) printed onto fabric, or on a disk so that we can print onto fabric in class.
- 'Printed Treasures' Fabric Sheets for Inkjet Printers
- Bead Soup consisting of at least the following: All sizes of seed beads (from 14/0 to 5/0) in numerous shapes (round, hex, tube etc.) in a variety of finishes (shiny, matte, transparent etc.).
- 8x4 inch fabric swatches in colors to compliment your bead soup – will be used to back the photos, so can be in a completely different color palette!
- Small pearls, stones, beads in various sizes in colors that compliment your bead soup and fabric palette
- 4x4 inch square Stitch Witchery – Fusible Bonding Web
- Ironing cloth
- Beeswax
- Size 12 needles
- Task light (optional)
- Scissors
- Bead mat for working your piece on
- Bead tray or extra mat for your bead soup
- Snap, Button or large bead for closure, if for a necklace or bracelet.

### Kits available for purchase in class:

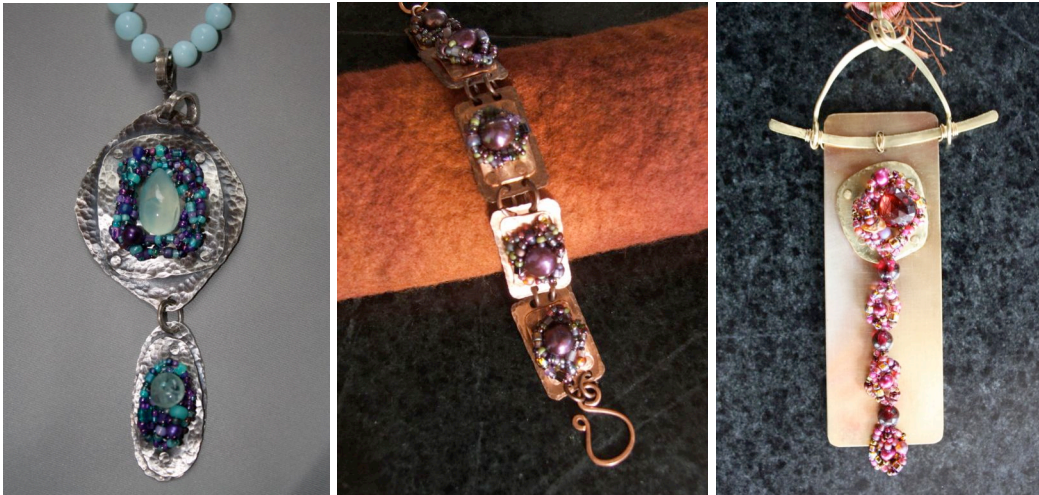
Choose as many bead soups from the Bead Soup Collection as you would like for the size of your piece, a sheet of photos and/or a package of fabric to complement your soup, needles, wax, thread, snap closure, bead mat and carrying case – all of the materials needed to complete your project.

Saturday, October 9 2010

## Beads on Metal & Beyond

Metalworking and bead weaving merged together! Create colorful components with inspirations on the back using straightforward metalworking techniques, a bead soup and a sense of whimsy. Then join and embellish them to create pendants, bracelets, earrings etc.

This class is designed for the novice and experienced Beads on Metal student. No matter your expertise there will be challenging project ideas and techniques!



### Materials List if you would like to bring your own supplies:

Metal Working (amounts listed for single pendant – adjust as desired)

- Copper, Brass, or Silver Sheet metal (24ga is ideal) – 4”x4”
- 14ga wire - 3 inches
- 18ga jump rings - 10 to 20 (or 1 foot 18ga wire for making them)
- 22ga wire - 3 feet

Bead Work

- Bead soup consisting of seed beads in a variety of sizes, shapes and colors
- One large (5 – 10 mm) focal bead for each component you wish to make (optional)
- Small accent beads to incorporate into the soup or to dangle from your piece
- Size 12 beading needles
- Nymo B or 4# fireline
- Bees wax and a beading mat to work on

**Kits available for purchase during class: \$35**

Beads on Metal kits include metal sheet, wire, your choice of 1 bead soup from the Bead Soup Collection - all of the materials needed to complete a Beads on Metal piece

### Tools:

I will have all of the metalworking and wireworking tools you will need to complete the project and you are welcome to use them. A tool list will be sent to attendees for those wishing to bring their own.

# 2010 Autumn Festival

## Jewelry Workshop Retreat on Whidbey Island

### The Details

#### **Our place:**

The Autumn Festival 2010 is a very small, intimate retreat in my island cottage with class size between 6 and 10 students per day. We will be working in my sun room with tons of natural light, views of water, wetlands, numerous birds and sunrises. And if the weather cooperates we can take a glass of wine down to the beach to watch the sunset. Make sure to bring walking shoes, warm layers and your camera!

We are located in Greenbank, WA an easy walk from the beach and also next to the 500 acre Greenbank Farm reserve with numerous trails, expansive views as well as galleries, gardens, wine tasting room, wine and cheese shops and a lunch-only restaurant that sells fabulous rustic bread made at the farm.

#### **Food:**

I will be making lunch, hors d'oeuvres and dinner for each day of beading (M, T, Th, F, S). Please let me know if you have any dietary restrictions.

Meals on the Wednesday tour of Whidbey will be purchased separately at whichever restaurants we choose to visit.

#### **Cost:**

Workshop tuition is \$100 per day (except Wednesday) which includes full day of instruction, full color handouts, lunch, dinner and of course wine and hors d'oeuvres in between.

#### **Registration Details:**

Registration is now open for those wishing to attend the entire retreat. Open enrollment for individual classes will begin on June 21st (after June 20th, full-retreat spaces cannot be guaranteed). Tuition payment is required to reserve your spot for each day of class you wish to attend and will be accepted on a first come, first serve basis. You may pay via the PayPal button on my website or contact me for other options.

I reserve the right to cancel any class that has not attained the minimum of 6 people. You will be contacted by e-mail and may choose another class or opt for a refund

#### **Cancellation Policy:**

I'm sorry, but due to the tremendous amount of preparation time and cost, I cannot accept refunds after August 31, 2010. All requests for refunds made before August 31st will incur a \$10 processing fee per class. However, you may transfer your registration to another person at any time without incurring any fees (please just notify me with the new name and e-mail).

### **How to get there and where to stay:**

Please note that transportation to and from the retreat, overnight accommodation and breakfast are not included in the retreat cost and must be made separately on an individual basis.

Greenbank is 1 1/2 hours from both Seattle (via ferry) and Bellingham (via Deception Pass) and makes for an easy day trip. There is a free Island County bus that meets each ferry - our bus stop is at the Greenbank Store (about 1/2 mile from our cottage). If you choose to take the shuttle, let me know and I will pick you up (and drop you off).

For those wishing to stay on the island, here are some wonderful places to stay and all just a short drive from our cottage:

#### **Greenbank (5 to 15 minutes)**

- \* Log Cabins B&B <http://www.guesthouselogcottages.com/index.html>
- \* Smuggler's Cove B&B (15 minutes) <http://www.smugglerscove.com/>

#### **Coupeville B&Bs (15 – 20 minutes)**

- \* Blue Goose Inn <http://www.bluegooseinn.com/index.html>
- \* Lovejoy Inn <http://www.thelovejoyinn.com/Coupeville-WhidbeyIsland.html>
- \* Cottage on the Cove <http://www.cottageonthecove.com/>

**Camping (10 - 45 minutes)** - all of these are stunning camp grounds! My parents took me year after year to Deception Pass, and my little family and I have been camping at Fort Ebey for the last 12 years - these are the places that made us fall in love with Whidbey Island! We have just discovered South Whidbey State Park - it is only 5 miles away and has areas of old growth forest just waiting to be explored.

- \* South Whidbey State Park (10 minutes)
- \* Fort Ebey (20 minutes)
- \* Deception Pass (45 minutes)